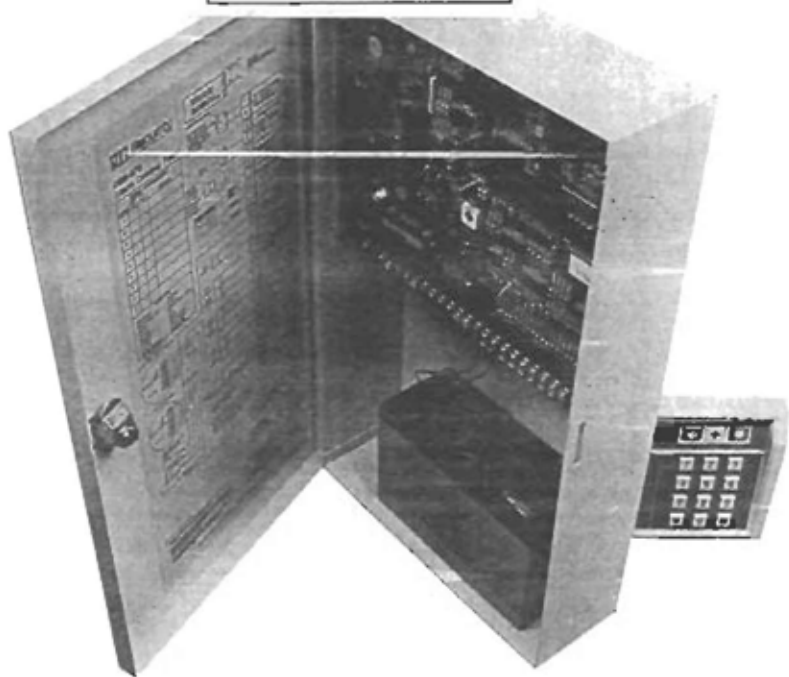


---

# USER'S MANUAL

---

## DSS/DCU-670 Security System

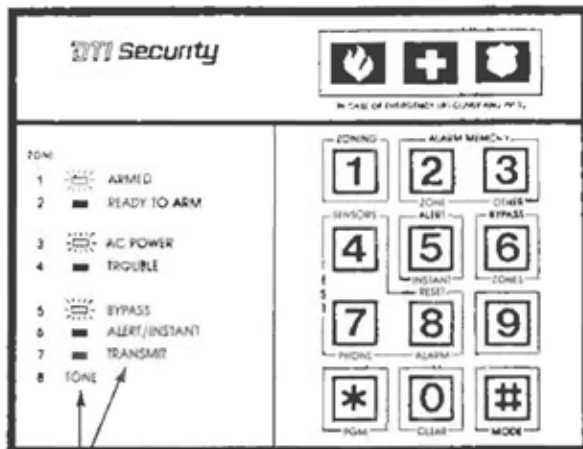


**ATI Security**

2

## Keypad Displays

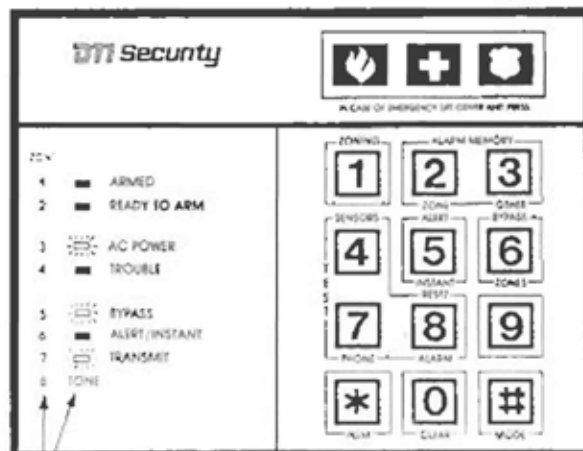
OPERATING & DISPLAY MODE: PRESS **#** **0**



EXAMPLE  
AC Power on  
System Armed  
with Standard  
Bypass zones  
bypassed

In the Operating Mode, lights indicate status of the system for conditions listed on the RIGHT side of the light display

INDIVIDUAL ZONING & DISPLAY MODE: PRESS **#** **1**



EXAMPLE  
Zones 3, 5 and  
7 are included  
in system  
protection

In the Individual Zoning & Display Mode, lights indicate status of the

## 3 System Configuration/Reference

Certified Alarm Installer \_\_\_\_\_ Service Phone \_\_\_\_\_

Master Code \_\_\_\_\_ Special Disarm Code \_\_\_\_\_

Secondary Codes \_\_\_\_\_ Duress Code \_\_\_\_\_

\_\_\_\_\_ AMC I. D. NO. \_\_\_\_\_

\_\_\_\_\_ AMC Phone No \_\_\_\_\_

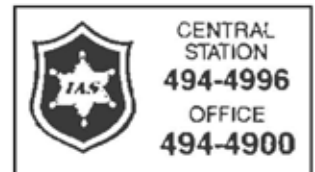
Exit Delay Time \_\_\_\_\_ Entry Delay Time \_\_\_\_\_ Audible Alarm Time \_\_\_\_\_

Special Entry Delay Time: \_\_\_\_\_ Fire Alarm Time: \_\_\_\_\_

Zone No	Zone Type	Zone Locations	Siren/Bell Alarm		AMC Report Enabled	Indiv Zoning	Std Bypass Zoning	Spec Disarm Code	Alert Zones
			Audible	Silent					
1			<input type="checkbox"/>	<input type="checkbox"/>	<input type="checkbox"/>	<input type="checkbox"/>	<input type="checkbox"/>	<input type="checkbox"/>	<input type="checkbox"/>
2			<input type="checkbox"/>	<input type="checkbox"/>	<input type="checkbox"/>	<input type="checkbox"/>	<input type="checkbox"/>	<input type="checkbox"/>	<input type="checkbox"/>
3			<input type="checkbox"/>	<input type="checkbox"/>	<input type="checkbox"/>	<input type="checkbox"/>	<input type="checkbox"/>	<input type="checkbox"/>	<input type="checkbox"/>
4			<input type="checkbox"/>	<input type="checkbox"/>	<input type="checkbox"/>	<input type="checkbox"/>	<input type="checkbox"/>	<input type="checkbox"/>	<input type="checkbox"/>
5			<input type="checkbox"/>	<input type="checkbox"/>	<input type="checkbox"/>	<input type="checkbox"/>	<input type="checkbox"/>	<input type="checkbox"/>	<input type="checkbox"/>
6			<input type="checkbox"/>	<input type="checkbox"/>	<input type="checkbox"/>	<input type="checkbox"/>	<input type="checkbox"/>	<input type="checkbox"/>	<input type="checkbox"/>
7			<input type="checkbox"/>	<input type="checkbox"/>	<input type="checkbox"/>	<input type="checkbox"/>	<input type="checkbox"/>	<input type="checkbox"/>	<input type="checkbox"/>
8			<input type="checkbox"/>	<input type="checkbox"/>	<input type="checkbox"/>	<input type="checkbox"/>	<input type="checkbox"/>	<input type="checkbox"/>	<input type="checkbox"/>
9			<input type="checkbox"/>	<input type="checkbox"/>	<input type="checkbox"/>	<input type="checkbox"/>	<input type="checkbox"/>	<input type="checkbox"/>	<input type="checkbox"/>

### EMERGENCY DISPATCH BUTTONS

MEDICAL	<input type="checkbox"/>	<input type="checkbox"/>	<input type="checkbox"/>
FIRE	<input type="checkbox"/>	<input type="checkbox"/>	<input type="checkbox"/>
ASSAULT	<input type="checkbox"/>	<input type="checkbox"/>	<input type="checkbox"/>



### OPTIONAL AMC REPORTING FUNCTIONS

	YES	NO		YES	NO
24 Hour Reporting	<input type="checkbox"/>	<input type="checkbox"/>	Zone Restore Reporting	<input type="checkbox"/>	<input type="checkbox"/>
Communicator Abort/Cancel	<input type="checkbox"/>	<input type="checkbox"/>	Trouble Reports	<input type="checkbox"/>	<input type="checkbox"/>
Opening/Closing Reports	<input type="checkbox"/>	<input type="checkbox"/>	Low Battery Reporting	<input type="checkbox"/>	<input type="checkbox"/>
AC Power Loss With Time Delay of _____ minutes	<input type="checkbox"/>	<input type="checkbox"/>			

### EMERGENCY TELEPHONE NUMBERS

Fire Department \_\_\_\_\_ Neighbors \_\_\_\_\_

Police Department \_\_\_\_\_

Doctor \_\_\_\_\_ Family \_\_\_\_\_

Church \_\_\_\_\_

## INTRODUCTION

Thank you for selecting our Burglar and Fire Alarm Security System. You have selected a highly reliable, state-of-the-art system designed to provide for your protection and to safeguard your assets, whether they be your home, family or business.

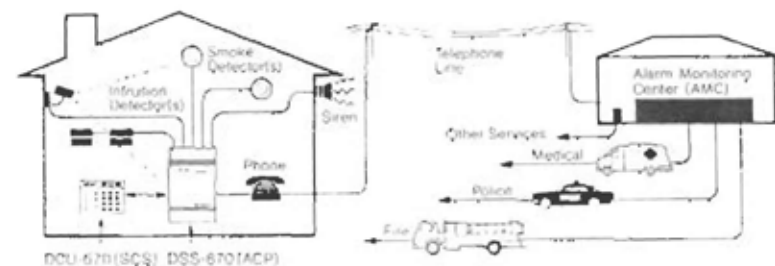
Each system is a custom installation designed to accommodate your particular needs. Due to this flexibility, your particular installation might have more or fewer features than those discussed in this manual. It is very important for you to be familiar with the operation of your system, including the other system components that may have been installed, in order for you to realize its full benefits and just as important, to prevent false alarms.

Your Alarm Control Panel (ACP) contains a microcomputer which allows many features to be included in a totally integrated design previously unavailable to the homeowner or business. The Alarm Control Panel (ACP) is capable of reporting alarms to a remote Alarm Monitoring Center (AMC) by use of an integral digital communicator via the standard telephone lines. Contact your installing company for further details. The Alarm Control Panel (ACP) processes four types of alarms: Fire, Burglary, Assault and Medical Emergency. The Fire Alarm System works with smoke detectors, heat detectors and manual pushbuttons. The Burglar Alarm System uses sensors on doors and windows, under carpet mats, interior motion detectors, glass break detectors, and other similar intrusion sensing devices. The Assault and Medical Emergency Alarm Systems are designed to be used with portable and/or stationary emergency switches.

The Burglar Alarm System is Armed and Disarmed by entering a 4-digit code on the keyboard of the System Control Station (SCS). Over 10,000 different combinations are available, providing an extremely high degree of security without the inconvenience of carrying a key. The SCS has seven indicator lights and an internal sounding annunciator to provide specific information concerning the status of the security system. Also, located on the upper right hand portion of the SCS, are three separate dispatch pushbuttons which will activate the Fire, Assault or Medical Emergency Alarm Systems if so programmed at the time of installation. These pushbuttons are covered by a transparent plexiglass cover to prevent accidental activation.

Your security system ACP is powered by 110 VAC and is backed up by a rechargeable 12 VDC standby battery, assuring protection even in the event of a power outage. Please read and understand the following information and instructions completely before operating your Security System. Keep this manual in a convenient, yet secure location, for future reference.

## TYPICAL SYSTEM



OPEN

SUBJECT	PAGE
DSS/DCU-670 Security System, Introduction	1
Keypad Displays	2
Operating & Display Mode	2
Individual Zoning & Display Mode	2
User System Configuration/Reference	3
Alarm Dealer	3
Master & Secondary Codes	3
System Configuration	3
Emergency Dispatch Buttons	3
Optional AMC Reporting Functions	3
User Quick Reference Data	5
Glossary of Terms	5
System Control Station Mode Functions	6
User Annunciator Tones	6
User Programming Functions	6
Operation	7
Operating and Display Mode	7
Arming the Intrusion Protection System	7
Exiting the Premises	8
Entering the Premises & Disarming the System	9
Alarms	9
Alarm Communication to AMC	10
Trouble Warning Signals	10
User Warning Signals	10
Manual 24-Hour Emergency Alarms	10
Alert/Instant Alarm Modes	11
Instant Alarm Mode	12
User Programmable Features	13
Secondary (Arm/Disarm) Codes	13
Special Disarm Code	13
Quick Arm	14
Zoning the Intrusion System	15
Individual Zoning & Display Mode	15
Standard "Bypass" Zoning Mode	15
"Zone Alarm Memory" Light Display	16
"Other Alarm Memory" Light Display	16
Supervised Fire System	17
Tamper Alarms	17
Testing the Security System	17
Sensor Test Mode	17
Phone Communications Test Mode	18
Fire Alarm Reset, Trouble Silence, Alarm Test Mode	18
Telephone Disconnection	18
Trouble Shooting	19
Emergency Evacuation Plans	20
DTI Security Limited Warranty	21
Consumer Information	21

**GLOSSARY OF TERMS**

- Alarm Control Panel (ACP):**  
The electronic "brain" of your system located on the protected premises which monitors the activities of the security system.
- System Control Station (SCS):**  
Remote keypad stations used to operate and show the status of the security system.
- Alarm Monitoring Center (AMC):**  
A remote facility designed to monitor incoming information on subscriber security systems. The AMC monitors and verifies alarm signals and dispatches authorities in response to actual alarm conditions.
- Digital Communicator:**  
A device located in the ACP which seizes the phone lines and communicates data on the security system alarms or other activity to the AMC.
- Arming:** Turning the security system "on."
- Disarming:** Turning the security system "off."
- Master Code:**  
A confidential 4-digit code programmed by the installer at installation. Capable of Arming and Disarming the system but used primarily to enable programming of system features.
- Secondary Code:**  
The user can program up to 6 Secondary Codes capable of Arming and Disarming the system via the SCS.
- Special Disarm Code:**  
A special (seventh) code which will DISARM ONLY a portion of the system to allow access to a limited area.
- Duress Code:**  
A special code that both disarms the system and sounds a silent alarm to Alarm Monitoring Center (AMC).
- Zone (Detection Circuit):**  
A sensor or group of sensors connected together (e.g., magnetic contacts, floor mats, etc.) which are monitored by the ACP.
- Supervised Detection Zone:**  
A zone which monitors violations of the sensors as well as breaks, shorts or other trouble conditions in the wiring of the security system.
- 24 Hour Zone:**  
A zone that is active at all times, regardless of whether the system is Armed or Disarmed. A 24 hour zone can only be bypassed by the Special Disarm code or as part of the Standard Bypass.
- Zone-In:** To add a zone of protection to the security system.
- Zone-Out:** To delete a zone of protection from the security system (Bypass)
- Bypass:** Same as zone-out
- Standard Bypass:**  
Preassigned zones that can be zoned-out of the system as a group.
- Exit Time/Entry Time:**  
The time periods selected by you during installation which allow sufficient time for your access in and out of the premises through selected door(s), without causing an alarm.
- Alarm Duration:**  
The amount of time the alarm will sound before shutting off automatically. (See also Zone-In)

**SYSTEM CONTROL STATION MODE FUNCTIONS:**

The user of the security system can select any one of eight different modes of operation and display, as well as program various features of the system using the SCS. The tables below summarize these functions of the system. These modes of operation and programming steps are more fully explained in later sections of this manual.

Mode	Description
MODE 0	Operating And Display Mode
MODE 1	Individual Zoning And Display Mode
MODE 2	Zone Alarm Memory Display
MODE 3	Other Alarm Memory Display
MODE 4	Sensor Test Mode
MODE 5	Alert And Instant Modes
MODE 6	Standard Bypass Mode
MODE 7	Phone Communications Test
MODE 8	Fire Alarm Reset, Trouble Silence, Alarm Test
MODE 9	Same As Mode 0
MODE 0	Return To Operating And Display Mode

**USER ANNUNCIATOR TONES**

The SCS uses various annunciator tones to warn the user that certain actions are required, or for other status information. The meaning of these "Beep" tones are different for the various modes of operation as described below.

WHEN IN "OPERATING & DISPLAY" MODE (#) (0)

- 1 Beep tone: Keyboard entry received
- 6 Rapid Beep tones: Invalid code entry
- 1 Second Beep tone: Valid Arming Sequence
- Beep tone every 15 seconds: User or Trouble Warning tones
- Continuous Beep tone: Entry delay period
- 1 Second Beep tone: Any change of status on Zoned-In zones number one through eight will give a 1 Second Beep tone when in the Alert Mode
- Pulsing short Beep tones: Medical Alarm
- Pulsing 2 Second Beep tones: Medical Alarm report received by AMC

WHEN IN "INDIVIDUAL ZONING & DISPLAY" MODE (#) (1)

- 1 Beep tone: Keyboard entry received
- Solid Tone: Zone 8 Zoned-out
- Pulsed Tone: Zone 8 Zoned-in and violated

WHEN IN "ZONE ALARM MEMORY" MODE (#) (2)

- 1 Beep tone: Keyboard entry received
- Beep tone: Zone 8 caused an alarm

WHEN IN "OTHER ALARM MEMORY" MODE (#) (3)

- 1 Beep tone: Keyboard entry received
- Beep tone: User warning zone(s) has been violated

**USER PROGRAMMING FUNCTIONS**

The table below is a brief summary of the keyboard entries for the features that are User programmable on the SCS.

Function	Programming Steps
Secondary Code 1	* + Master Code + 1 + desired 4 digit number
Secondary Code 2	* + Master Code + 2 + desired 4 digit number
Secondary Code 3	* + Master Code + 3 + desired 4 digit number
Secondary Code 4	* + Master Code + 4 + desired 4 digit number
Secondary Code 5	* + Master Code + 5 + desired 4 digit number
Secondary Code 6	* + Master Code + 6 + desired 4 digit number
Secondary Code 7	* + Master Code + 7 + desired 4 digit number

# Operation

## OPERATING AND DISPLAY™ MODE (#) (0)

The most commonly used mode of operation for your Security System is the Operating and Display™ Mode (#) (0). In this mode, you will perform the normal operating functions and receive the status information required in the daily use of your system. You will need to be in this mode anytime you want to Arm or Disarm the system, silence an alarm condition, review the Zone "Ready" display lights, hear beep tones, etc. To enter into this Operating Modes press (#) (0) on the SCS before performing any additional keyboard entry functions. If there is any doubt as to what mode of operation you are in, simply press these two keys again to provide that assurance. Normally the system will be in the Operating Mode. However, if in the daily use of your system you have used modes 1, 2, or 3, you can immediately return to the Operating Mode by entering (#) (0) on the keyboard, or alternatively after 30 seconds of NO keyboard entries the SCS will automatically return to the Operating Mode. In the other remaining modes of operation the SCS will either not leave, or will automatically return to the Operating Mode immediately after completion of that function.



Display Light	On	Off	Flashing
1  ARMED	Armed	Disarmed	Alarm Memory Condition or Exit time
2  READY TO ARM	Zoned-In Sensors Secured	Zoned-In Sensors Violated	Alarm Memory Condition
3  AC POWER	AC Power OK	Total Power Loss	On Standby Battery Power Only
4  TROUBLE	Trouble Condition Exists (Audible)		Trouble Condition Exists (Silent)
5  BYPASS	Standard Bypass Zones are Bypassed	All Zones Included in Protection	Zones other than Standard Bypass Group are Bypassed
6  ALERT/INSTANT	When System Armed, Instant Feature Enabled	N/A	N/A
6  ALERT/INSTANT	When System Disarmed, Alert Feature Enabled	N/A	N/A
7  TRANSMIT	Communicator Dialing	No Communication In Progress	AMC Did Not Receive Data Properly
8  TONE	User Indicator Signals (see user annunciator tones on page 6 for descriptions.)		

## ARMING THE INTRUSION PROTECTION SYSTEM

READY TO ARM

To "Arm" the intrusion protection, secure all the protected areas, (all doors, windows, etc.). The green "Ready to Arm" light on the SCS will be illuminated when all the selected protected areas and sensors are secure.

READY TO ARM

The system will NOT "Arm" if the "Ready to Arm" light is NOT illuminated. With the "Ready to Arm" light "ON" you may enter your Master Code, one of the Secondary Codes or the Special Disarm Code to "Arm" the intrusion

X X X X  
CODE

BEEP  
BEEP  
BEEP  
BEEP  
BEEP

ARMED

BEEP

AC POWER

BEEEEEP

X X X X  
CODE

protection portion of the system. The confidential 4-digit Master Code is selected by you and programmed by the installer at the time of installation. Although the Master Code is capable of Arming and Disarming the system, we recommend the Master Code be used primarily for programming of system features. (Refer to page 13 for programming of Secondary codes.)

Each time a keypad button is pressed, the SCS will sound a short Beep tone to indicate that the ACP has received the information entered. If the Beep tone does not sound, reenter the information. A series of short Beep tones indicates the code which you entered has not been accepted as valid. Wait until the invalid code tones have stopped before attempting to reenter a valid code. If you have entered an incorrect digit, either wait for approximately 10 seconds or press (#) (0) and reenter a correct code.

Five entries of an invalid code will cause the system to lock out all codes except the Master Code. This Wrong Code Lockout feature prevents unauthorized attempts to Arm or Disarm the system. The Wrong Code Lockout feature will remain in effect until the Master Code is used or for a duration of 5 minutes. If you wish to use the single button arming feature (Quick Arm) instead of the 4 digit code, contact your installer.

When the ACP has accepted a valid code, the intrusion protection system will Arm. The red "Armed" light will begin to flash and a one second Beep tone will sound. The "Armed" light will continue to flash for the duration of the exit delay time and then illuminate continuously indicating the exit delay time has expired. Each time you Arm the system, the AC Power Light will flash momentarily while the system performs a short self-test and battery check.

Your ACP contains an important feature called Exit/Entry delays. This means that you can Arm your system while inside the premises and using the Exit delay period, have a pre-set time to exit before any alarms will be triggered. After expiration of the Exit delay time your system will be fully Armed, protecting the premises while you are away. When you return and reenter through a specified Exit/Entry door, a pre-set Entry delay countdown period will start, allowing you time to Disarm the system from the SCS before the alarm sounds. A warning tone will sound during the Entry delay period to conveniently remind you of this important timing period. For certain entry points (e.g. garage doors) you may have a separate, longer delay programmed.

## EXITING THE PREMISES

Exiting the protected area after the intrusion protection system has been "Armed" must be done through the designated exit/entry doors, within the time period you selected during the system installation. (Refer to the chart on page 3 to determine which doors are on zones designated for exit/entry.)

After "Arming" the intrusion protection, you may then open the exit/entry door, exit, close and lock the door. There is no need to rush since adequate time will have been provided for a normal exit.

If you should be detained when leaving the protected area and the delay time expires, enter a correct code to Disarm the system, then Re-arm following the "Arming" sequence as described in the Arming section on page 7.

**CAUTION** EXITING THE PROTECTED AREA AFTER THE EXIT DELAY HAS EXPIRED WILL CAUSE AN ALARM CONDITION TO OCCUR.

BEEEEP

X X X X  
CODE

ARMED

BEEP BEEP BEEP BEEP BEEP

# 0

X X X X  
CODE



ARMED

READY TO ARM



# 8

X X X X  
CODE



X X X X  
CODE

BEEP

X X X X  
CODE



X X X X

### ENTERING THE PROTECTED PREMISES AND DISARMING THE INTRUSION PROTECTION SYSTEM

Upon entering the protected area through one of the designated exit/entry doors, the SCS will sound a steady user warning tone for the duration of the preset entry delay time or until the system is Disarmed. During the entry delay time, enter a correct 4-digit code to Disarm the system. The red "Armed" light will go out and the steady tone will stop, indicating the intrusion protection is disarmed.

If an invalid code is entered, the SCS will sound the invalid code Beep tones. If the system does not Disarm, enter (#) (0) and reenter a correct code. Failure to Disarm the system prior to the end of the entry delay time will cause an alarm to sound and initiate reporting to the AMC if this service has been provided as part of your system installation. At installation of your system, your installer will have selected an option that may cancel the alarm report to the AMC if you Disarm your system shortly after the alarm has started. (See installer for details.)

### ALARMS

Your system will have been installed with a local sounding alarm device (siren or bell) to warn you or your neighbors of an alarm condition, and more importantly, to scare off any intruders. The length of time your local sounding device will sound an alarm is selected at installation. After this pre-set alarm time has expired, your system will return to its Armed state excluding any zone(s) which are still violated. Excluding the still violated zone(s) from the intrusion protection system provides protection of the secure zones and prevents repeated alarms due to violated zone(s). This system reset assures you of protection in the event you are away and unable to reset the system. Any zone(s) which were violated but again secured prior to this system reset, will again be included in the intrusion protection system.

In the event your system is in the alarm condition (local, siren, bell or AMC reporting activated) or has been in an alarm condition as indicated by the Alarm Memory Indicator (flashing Armed and Ready lights), the system can be restored as follows:

#### FIRE ALARM

A Fire alarm is signalled by a local, interrupted sound and the sending of a digital message to the AMC. Enter (#) 8 to restore the system and to silence the alarm, and a valid Disarm code to clear the alarm memory lights.

#### INTRUSION ALARM

An Intrusion alarm is signalled by a local, continuous, alarm sound and/or the sending of a digital message to the AMC. Restore the system and clear the Alarm Memory lights by entering a valid Disarm code.

#### MEDICAL ALARM

A Medical alarm is indicated by a Beep tone from the SCS and/or the sending of a digital message to the AMC. Restore the system and clear the Alarm Memory lights by entering a valid Disarm code.

#### ASSAULT ALARM

An Assault alarm is indicated by a continuous alarm sound and/or the sending of a digital message to the AMC. This feature is selected at the time of installation. Restore the system and clear the Alarm Memory lights by entering a valid Disarm code.

#### NOTE

For instructions on clearing all Alarm Memory lights, see page 16.

### ALARM COMMUNICATION TO AMC

Your ACP can be installed utilizing its integral digital communicator to also report all alarm conditions and other status information to the AMC. Using the standard telephone network, the ACP will dial the AMC and electronically communicate the reports for the Intrusion, Fire, Assault and Medical alarms. Up to 100 other unique reports such as A.C. Power Loss, Trouble conditions, Low Battery, Arm/Disarm with identification of code used, etc. can also be communicated, if so desired. See your installer for information on what other reports, if any, will be made in your system.

#### IMPORTANT NOTE:

Remember, a valid code can only be used to terminate an alarm or Arm/Disarm if the SCS is in the "Operating mode". If you find that the system will not respond to valid Arm/Disarm codes, enter (#) (0) to return to the "Operating Mode" and then reenter a correct code.

# 0

X X X X  
CODE

TROUBLE

BEEP...BEEP

# 8

TROUBLE

BEEP...BEEP

TROUBLE

WHOOOP

BEEP...BEEP

# X X X X  
CODE

0



### TROUBLE WARNING SIGNALS

A trouble warning condition is indicated by a light indicator and a Beep tone from the SCS every 15 seconds. A Trouble Warning Signal can be caused by the following:

1. A defective fire detection circuit.
2. A violated 24 hour zone after the local alarm has been silenced.
3. Any zone not restored after a total power loss (A.C. and battery).

The Beep tone can be silenced by entering (#) (8). This will now cause the trouble light to flash indicating that a silent trouble condition exists. During this period, call your certified installer to correct any problems in order to fully restore the system. Following 24 hours of this silent condition, the Beep tone will again start to sound, and the light will become steady.

### USER WARNING SIGNAL

Your security system may be installed with a unique, local-only User Warning feature. This protection zone utilizes two different detection techniques and provides the user two different audible Warning signals. Either a "2 second alarm sound" from an audible device such as a speaker or bell (if installed), or a "Beep tone every 15 seconds" will be emitted from the SCS upon violating this zone. These Beep tones will continue until cleared by entering (#), Master Code and (0). This feature can be used to monitor gun or medicine cabinets or other similar secure areas without producing a normal intrusion alarm signal.

### MANUAL 24 HOUR EMERGENCY ALARMS

You can manually initiate an Emergency alarm at anytime (24 hrs a day) by simply lifting the plexiglass cover on the SCS and pressing the Emergency Dispatch buttons on the keypad marked for "Fire" (red with white flame), "Medical Emergency" (white with red cross), or "Assault" (blue with white shield).

As an option, you may choose to have additional portable and/or stationary Emergency switches located elsewhere on the protected premises. The 24 hour manual Emergency alarms are always operational, independent of whether the Intrusion Protection portion of the system is "Armed" or "Disarmed". Each Emergency Dispatch Button alarm will report only once in an 8 minute period to the AMC as a safeguard against misuse. After the 8 minute period, depressing the same Emergency Dispatch Button will again activate

## MANUAL 24 HOUR EMERGENCY ALARMS



### FIRE

Pushing the "Fire" Dispatch Button will cause the local alarm to sound and transmit an alarm report to the AMC.



### MEDICAL EMERGENCY

Pushing the "Medical" Dispatch Button will cause the annunciator in the SCS to sound 1/2 second tones and transmit an alarm report to the AMC. When the AMC has received the alarm report, the 1/2 second tones will change to 2 second tones until a valid Disarm code is entered. The "Medical" Dispatch Button should be used only in emergency situations requiring immediate assistance from appropriate medical personnel.

BEEP BEEP

BEEP . . . BEEP



### ASSAULT

Pushing the "Assault" Dispatch Button will cause the local alarm to sound and transmit an alarm report to the AMC. The "Assault" Button should be used only in emergency situations requiring immediate response from the appropriate law enforcement personnel.

### PLEASE NOTE:

1. All of the above emergency alarms may be reset or cleared after activation by entering a valid Disarm code. The audible local alarm for Assault will automatically stop after the preset audible alarm time period has expired. The local audible alarms for Fire and Medical Emergency will continue to sound until manually reset with a valid Disarm code.
2. The manually activated emergency alarms will report alarms to the AMC over the standard telephone line only if the system has been programmed to do so at the time of installation.
3. As an option, the Medical Emergency and Assault alarms can be programmed to be "silent" at the premises while still reporting the alarm signal to the AMC. Your installer may also, at your request, disable one or more of the Emergency Dispatch Buttons on any SCS.
4. If you have any questions regarding the configuration of your security system, please refer to the chart on page 3 or ask your certified alarm installer.

X X X X  
CODE

### ALERT/INSTANT ALARM MODES: (#), (5)

There are two unique features of the ACP which can be utilized in the daily operation of the system: Alert Mode and Instant Alarm Mode. These two features operate as follows:

#### ALERT MODE

A sensor "Alert" feature is available which can be used while the ACP is Disarmed. It allows you to monitor the selected sensors on Zones 1 through 8 without having the intrusion protection portion of the system Armed, and thus causing an alarm.

**NOTE: THE 24 HOUR ZONES WILL STILL CAUSE AN ALARM IF VIOLATED IN THE "ALERT" MODE.** Please refer to the chart on page 3 for information on which zones function in the "Alert" Mode.

BEEP



ALERT/INSTANT



ALERT/INSTANT

While in the "Alert" Mode, a violation of any sensors (opening and/or closing of doors & windows, movement in areas where motion sensors are located, etc.) in the Zones which are Zoned-In will cause the SCS annunciator to sound a 1 second Beep tone. This "Alert" mode is cleared when the system is armed.

To Enable the "Alert" Mode while the system is Disarmed:

1. Press the (#) (5)
2. The ALERT/Instant light will light.

To remove the "Alert" Mode:

1. Press the (#) (5).
2. The ALERT/Instant light will go off.

#### INSTANT ALARM MODE

The "Instant Alarm" feature, which is usable only when the system is Armed, allows a user to temporarily set the Exit/Entry Zone's entry delay time to zero. This feature is typically used when the user wants to Arm the system, remain within the protected premises, and have ANY violation of secured zones, including the Exit/Entry Zones, cause an instant alarm to occur. To use this "Instant Alarm" feature:

1. Follow the standard Arming sequence on page 7.
2. Within 5 seconds after Arming, press the (#) (5) buttons.
3. The Alert/INSTANT Light will illuminate.

The (#) and (5) buttons must be pressed within 5 seconds after the Arming Code is entered to be considered a valid entry. The "Instant Alarm" mode will automatically be removed upon Disarming the system.

#### WARNING

If you should decide to use this "Instant Alarm" feature and still leave the premises, you will have your normal exit delay time. But upon reentry to the premises, you will cause an instant alarm to occur.

X X X X  
CODE



ALERT/INSTANT

## User Programmable Features

### SECONDARY (ARM/DISARM) CODES

In many system applications there is a need to give other individuals such as friends, janitors, employees, etc. authorization to Arm and Disarm the system. For this reason, the system will allow the user to program as many as six different Secondary codes into the security system using the SCS. These codes will Arm or Disarm the entire system.

The system also has the capability of reporting to the AMC which particular code was used to Arm or Disarm the system. Consult your installer for additional information. In order to keep the Master Code confidential, it is also recommended that the primary User(s) use a Secondary Code rather than the Master Code for normal daily operation. The Master Code is selected at installation and may only be changed by a Certified Alarm Installer.

#### To Program Or Change A Secondary Code

1. Press (\*).
2. Within 5 seconds, enter the correct Master Code.
3. Within 5 seconds, press (1), (2), (3), (4), (5), (6), or (7) button to indicate which Secondary Code you wish to program or change. Do not press more than one button at this time.
4. Within 5 seconds of selecting 1, 2, 3, 4, 5, 6 or 7, enter in the new 4 digit Secondary Code you wish to use. Any digit 0 through 9 may be used. Repeating digits are also allowed. The new code will automatically replace any existing code in the system memory.
5. After entering the last digit of the new code, test this code by Arming and Disarming the system. If the system doesn't respond correctly, repeat the programming process or refer to the Troubleshooting section on page 19.

#### To Delete A "Secondary Code"

1. Press(\*) button.
2. Within 5 seconds, enter Master Code.
3. Within 5 seconds press button (1), (2), (3), (4), (5), (6) or (7) to indicate which Secondary Code you wish to delete. Do not press any other buttons at this time.
4. Waiting for 10 seconds or entering (#)(0) will erase the old code from memory. You can now enter the 4 digits of the Secondary Code that was just deleted to verify that this code actually has been erased.

### SPECIAL DISARM CODE

A eighth "Special" code can be programmed by your Installer which will Disarm only a portion of the system to allow access to a limited area of the protected premises. This code is typically used in applications such as allowing a janitor access only to specific rooms. Refer to the chart on page 3 for a list of the zones that are Disarmed with this Special Code. These zones are selected by you and programmed by the installer at installation. To program a Special Disarm Code, follow the procedures for Programming Secondary Codes. NOTE: The Special (8th) Disarm code can also be used to zone out 24 hour zones if so programmed during the installation. When in the Special Disarm mode, the Zoning mode is inoperative. To return to the normal Operating mode, the system must be fully Armed and then Disarmed by a valid code other than the Special Disarm Code. Any code that will fully

### 0

### QUICK ARM

Your security system may be equipped with a "Quick Arm" feature that will allow Arming of the security system by simply pressing the Zero "0" button on the keypad once. To Disarm the system, you must still enter a valid four digit code.

### DURESS CODE:

A ninth "DURESS CODE" can be programmed by your Installer. It will disarm the system and send a silent DURESS report to the Alarm Monitoring Center (AMC). This feature can be used if you are forced to disarm the system against your will.



X X X X  
CODE



X X X X  
CODE



X X X X  
CODE



X X X X  
CODE



X X X X  
CODE



# Zoning the Intrusion System

## ZONING THE INTRUSION PROTECTION SYSTEM

The Intrusion Protection system can be divided into as many as 8 protected "areas" or "zones." These zones were assigned at the time of installation and can be added or deleted from the system by the user. The zone assignments are shown on the chart on page 3 of this manual. Zoning can only be accomplished when the system is in a fully Disarmed condition. No zoning is available in the "Special" Disarm mode. Every time the system is Disarmed, all zones, including previously bypassed zones, are automatically included back into the system.

### INDIVIDUAL ZONING AND DISPLAY MODE: (#), (1)

Zoning (Adding or Deleting) individual zones can ONLY be accomplished while in the Zoning mode. To enter the Individual Zoning and Display mode, press (#)(1) on the keypad. The zone indicator lights and annunciator on the SCS will now display the condition of zones 1 through 8 as shown below.

ZONE	1	2	3	4	5	6	7	8
Zoned-In	LIGHT ON							TONE OFF
Zoned Out Or Trouble Condition	LIGHT OFF							TONE ON
Zoned-In And Violated	LIGHT FLASHING							PULSED TONE

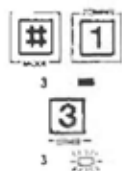
When in this mode, the user can individually add or delete zones from the system by pressing the corresponding keypad button. Example: To add or delete Zone 3 from the system, first enter into the Zoning Mode by pressing buttons (#)(1). Zone 3 can now be Zoned out by pressing button (3), and the third indicator light will turn off. This zone can be zoned back in by pressing button (3) a second time and the zone indicator light will turn back on.

When you have finished selecting the zones to be included or deleted from the system, you must return to the "Operating" mode from the "Zoning" Mode. To return to Operating & Display Mode, enter (#)(0). The system will automatically return to Operating & Display Mode after 30 seconds of no keyboard activity. Refer to the chart on page 3 for information on which zones are individually zoneable in your system.

### STANDARD "BYPASS" ZONING MODE: (#), (6)

For user convenience, a Standard "Bypass" configuration can be programmed into the system by your installer. This group of most commonly bypassed zones may then be quickly deleted from the system without the need to enter the Zoning Mode (#)(1) on the SCS. The Standard "Bypass" Zone Group is typically interior zones which must be deleted prior to Arming the system when the user is intending to remain within the protected premises after the system is Armed.

To delete the Standard Bypass Zones from the system, first check to see that the Bypass light is not flashing before Arming the system. If the Bypass light is not flashing, be sure you are in the Operating Mode (#)(0), then press (#)(6). A flashing Bypass light indicates zones other than the Standard Bypass zones have been already deleted from the system. If any zones



have been deleted, pressing (#)(6) will add them back into the system. Pressing (#)(6) a second time will then zone out the Standard Bypass zones and the Bypass indicator will light. Refer to the chart on page 3 for information on which zones are included in the Standard Bypass group for your system.

### "ZONE ALARM MEMORY" LIGHT DISPLAY MODE: (#), (2)

Your system is capable of indicating which zone(s) have caused an alarm through the use of the SCS lights and Beep tones. To enter the "Zone Alarm Memory" Mode, press (#)(2). The zone indicator lights 1 through 7, when lit, will indicate which zone(s) caused an alarm. Alarm Memory for Zone 8 is indicated by a Beep tone from the SCS. To return to the "Operating" Mode, enter (#)(0) on the keyboard.

ZONE	1	2	3	4	5	6	7	8
LIGHT ON (Or Tone on 8)	ZONE CAUSED AN ALARM							
LIGHT OFF (Or No Tone on 8)	ZONE DID NOT CAUSE AN ALARM							

### "OTHER" ALARM MEMORY LIGHT DISPLAY MODE: (#), (3)

Alarm Memory indication for other types of alarms and/or supervisory functions can be accessed by entering into MODE (#)(3). The SCS indicator lights and Beep tones indicate the alarms and/or trouble conditions occurred as follows:

DISPLAY LIGHT	LIGHT ON	LIGHT OFF
1. Zone 9	Had Alarm	No Alarm
2. Duress Code	Had Alarm	No Alarm
3. Fire Dispatch Key	Had Alarm	No Alarm
4. Medical Dispatch Key	Had Alarm	No Alarm
5. Assault	Had Alarm	No Alarm
6. Low Battery	Trouble	No Trouble
7. AC Power Loss	Trouble	No Trouble
BUZZER TONE	TONE	NO TONE
8. User Warning Zone(s)	Had Alarm	No Alarm

#### NOTE:

All of the above Alarm Memory indicators are cleared whenever a new alarm occurs after at least one arm/disarm sequence.



To return to the "Operating" Mode . . . . .

## Supervised Fire System



TROUBLE

X X X  
CODE

TROUBLE

If installed, the security system provides for a Supervised Fire Circuit that can be activated by individual smoke detectors and/or heat detectors. Should the fire alarm sound, it is recommended that you immediately follow your established emergency evacuation plans. Refer to page 20 for further details. After the emergency condition is over, or if the alarm was accidentally initiated, (caused by excessive smoke from cooking or fireplace), the audible fire alarm may be silenced by pressing (#) (8). The Trouble light will illuminate and the system will test itself. If the fire detection system is secure, the trouble light will extinguish after 5 seconds. The Alarm Memory light may now also be cleared by entering a valid Disarm code.

If the Trouble light has not extinguished, the fire system is not operational. Depending on the type of smoke detector used, you may need to clear the detector by removing smoke from the chamber as suggested by the detector manufacturer or otherwise reset individual detectors. After clearing the detectors, enter (#) (8) again. The Trouble light should now extinguish after 5 seconds. If the Trouble light remains lit, call your certified alarm installer. Please refer to the Trouble Warning section on page 10 for additional information on indicators and tones.

### NOTE:

To stop the blinking red/green lamps, a valid disarm code must be entered.

## Tamper Alarms

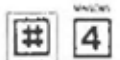
There are no user serviceable parts inside the ACP and the SCS. If service is required, please call your certified alarm installer. Your security system may be equipped with tamper switches which will activate a local alarm and/or silent AMC report when the cover(s) of the ACP or other security devices in the system are removed.

## Testing the Security System

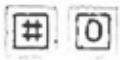
There are several tests which you should perform at least once per week to ensure that your system is functioning properly.

### SENSOR TEST MODE: (#), (4)

READY TO ARM



WHOOOP



To test the intrusion protection system, first close all doors or windows or otherwise make all sensors secure on the zone(s) and verify that the "Ready" light is on. Now Zone-in all zones and activate the "Sensor Test" Mode by pressing (#) (4). Test each intrusion detection sensor by violating the protected areas (open doors, windows, walk through motion sensors or over floor mats, etc.). You should hear a short alarm sound (bell/iren) each time you test (violate or restore) a sensor. PLEASE NOTE THAT 24 HOUR ZONES WILL STILL CAUSE AN ALARM, AS NORMAL, EVEN IN THE SENSOR TEST MODE. Refer to the chart on page 3 for information and description of the zones in your system. Contact your certified installer for help in testing 24-hour zones. To end this Sensor Test mode, enter

1-800-368-2622

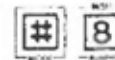
### PHONE COMMUNICATIONS TEST MODE: (#), (7)



TRANSMIT

To test the AMC (telephone communicator) functions of your system, (provided this has been programmed at installation), simply press (#) (7). The Transmit light will illuminate when the system communicator takes control of the phone lines to dial and report to the AMC. During this transmission period, your phone lines will be interrupted, and you will be unable to use your phone for regular service for the 1-15 minute duration of the communicator test. The "Transmit" light will extinguish when the transmission has been completed and the communicator releases the phone line. If the ACP Communicator fails to report properly, the "Transmit" light will flash and will remain flashing until the system is again Armed. This test will terminate automatically, returning you to the Operating Mode.

### FIRE ALARM RESET, TROUBLE SILENCE, ALARM TEST MODE: (#), (8)



To test the rechargeable standby battery and the audible local alarm (bell or siren), simply press the MODE (#) (8) buttons. This test momentarily disconnects the AC power to the ACP and tests the battery and audible alarm devices by activating the local audible alarm for two seconds. A short or weak alarm sound or no sound indicates a low battery condition or a defective alarm sponder. To test the battery under a trouble condition, press MODE (#) (8) twice within 5 seconds. The audible trouble signal will also be silenced at this time. Individual smoke detectors should be tested according to the specific manufacturers' instructions. This test is terminated automatically, returning you to the Operating Mode.

### PLEASE NOTE:

If any of the above test results are not successful in any manner, or you are not sure of the results, repeat the procedures as described above. If, after a second time, the test results are not successful or you still have questions, contact your certified installer.

## Telephone Disconnection

In the event of operational problems, your ACP can be disconnected from the phone system by removing the connection at the RJ31X jack. We recommend your certified alarm installer demonstrate disconnecting the ACP from this jack upon installation of the system. DO NOT disconnect the phone connection inside the ACP doing so will interrupt your phone lines. If your regular phone works correctly after the ACP has been disconnected from the phone lines, the telephone communicator in the ACP has a problem and your certified alarm installer should be contacted for service.

If upon disconnection of your communicator, there is still a problem on your line, notify the telephone company that they have a problem and request prompt repair service. The user may not under any circumstances (in or out of warranty) attempt any service or repairs on the ACP. It must be returned to the factory or an authorized service agency for all repairs.

### NOTE:

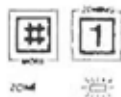
WHEN THE SYSTEM IS COMMUNICATING WITH THE AMC, THE PHONE LINE IS SEIZED AND THE USER PHONES ARE DISCONNECTED. THE SCS INDICATES THIS CONDITION BY A STEADY TRANSMIT LIGHT. UNDER NORMAL CIRCUMSTANCES, THE PHONE LINE SEIZE SHOULD ONLY BE 1-2 MINUTES. HOWEVER, LINE SEIZE COULD LAST UP TO 15 MINUTES IF TROUBLE EXISTS. IF THIS OCCURS REGULARLY, CONTACT YOUR CERTIFIED INSTALLER.





- Symptom:** The Secondary Codes will not operate the system.
- Check:** Arm or Disarm the system once with the Master Code. The Secondary Codes are locked out for a period of 5 minutes if 5 incorrect codes have been entered in a row. Repeat secondary code programming procedure on Page 13 to reprogram the desired secondary codes.

- Symptom:** "Quick Arm" does not Arm the system.
- Check:** If pressing "0" does not Arm the system it may be reprogrammed into the system. Contact your installer.



- Symptom:** "Ready to Arm" Light will not turn on.
- Check:** One or more of your selected protected areas or sensors are not secured. Check the status of your individual zones by entering into the "Zoning" Mode by pressing (#) (1) for a light display of the violated zone(s). The violated zone(s) are indicated by a flashing light. Check the sensors on these zone(s) to determine which is not in a "Ready" condition.

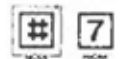
- Symptom:** A Zone or Protection Sensor is Inoperable.
- Check:** Should you determine that a sensor or zone is inoperable, but you need to leave the premises, the system will allow you to delete this defective portion from the system. While we do not recommend operation of a security system with a protected zone or sensor removed, we recognize that immediate requirements may make some protection better than none. To delete an inoperable zone from the system, refer to the Zoning Section on page 15. Immediately call your certified alarm installer for assistance in correcting any defective protection zones.

- Symptom:** "Trouble" Light is lit accompanied by a 15 second Beep tone.
- Check:** This light when lit indicates a 24 hour zone(s) is in a supervisory Trouble condition. Refer to page 10 for further information on silencing the Beep tone. Call your certified alarm installer to service the system.



BEEP... BEEP

- Symptom:** Your Phone service is interrupted.
- Check:** Check the "Transmit" light on the SCS. When lit, this light indicates transmission of a digital message to the AMC is in progress. If not lit, no transmission is in progress and a Communications Test should be attempted. Refer to the Communicator Test section (#) (7) on page 18 to perform this test. If not successful or if the phone line is not restored, you may disconnect the ACP from your phone. (See page 18.) Call your certified alarm installer for service.



- Symptom:** "AC Power" Light is flashing.
- Check:** This indicates that A.C. power is not being provided to the system and the system is functioning on Standby Battery power only. Check to see that the power transformer is functioning properly.



An emergency evacuation plan should be established for an actual fire alarm condition. For example, the following steps are recommended by the National Fire Protection Association and can be used as a guide in establishing this plan for homes or commercial establishments:

Draw up a floor plan of your premises. Show windows, doors, stairs, and rooftops that can be used for escape. Indicate each room's escape routes. Determine two means of escape from each room. One will be the door leading to the normal exit from the premises. The other may be a window that opens easily. An escape ladder may have to be located near the window if there is a long drop to the ground below.

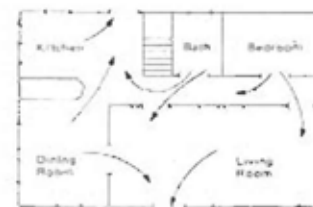
Set a meeting place outdoors for a headcount of all occupants. Practice escape procedures. For increased home safety, sleep with the bedroom door closed. It will increase your escape time. If you suspect fire, test the door. If it is hot, the hall is already too hot to enter. If you think it's safe, brace your shoulder against the door and open it cautiously. Be ready to slam the door if smoke or heat rush in. Practice escaping to the outdoors and meeting in an assigned spot. Call the fire department from a neighbor's phone.

**NOTE:**  
After the installation of your alarm system has been completed, you or your certified alarm installation company should notify your local Fire and Police Departments to give them your name and address for their records and to comply with any local ordinances.

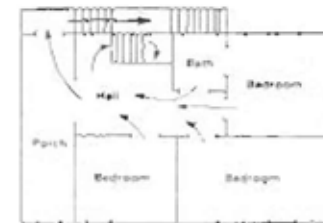
Early warning fire detection is best achieved by the installation of fire detection equipment in all rooms and areas of a household as follows: A smoke detector installed in each separate sleeping area (vicinity of, but outside of the bedrooms), and heat and smoke detectors in living rooms, dining rooms, bedrooms, kitchens, hallways, attics, furnace rooms, closets, utility and storage rooms, basements and attached garages. This equipment should be installed in accordance with the National Fire Protection Association's Standard 74. For additional information write:

National Fire Protection Association  
470 Atlantic Ave.  
Boston, MA 02210

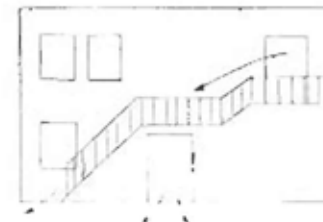
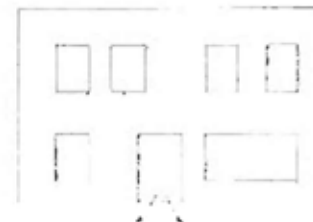
Calif. State Fire Marshal  
7171 Bowling Drive, Suite 600  
Sacramento, CA 95823



First Floor



Second Floor



---

# USER'S MANUAL

---

## DTI SECURITY LIMITED WARRANTY

DTI Security Instruments are warranted to be free from defects in material and workmanship for a period of 12 months from date of shipment to the original purchaser. Defective units shall be returned by the buyer at his own expense to the installing dealer who will forward the equipment to us for inspection and/or repair. During this warranty period, DTI Security will, at our option, repair or replace the unit without charge, provided that after our inspection, it is the opinion of DTI Security that the unit has not been subject to electrical or physical misuse.

In no event shall DTI Security be liable for any loss or damage, consequential or otherwise, arising out of the use by buyer or failure of the product to operate, beyond the cost of the repair of the product. DTI Security makes no warranty of fitness or merchantability of the product. The installation of the product is the sole responsibility of the installing company, and DTI Security shall in no way be held responsible for such installation or use of the product, or for any other acts by the installer.

This warranty is exclusive and given in lieu of all other warranties, express or implied, and is void if the equipment has been visibly damaged by accident, misuse, or if the unit has been modified by anyone other than DTI Security.

## CONSUMER INFORMATION

The Federal Communications Commission (FCC) requires the following information be provided for all computing devices:

This product has been tested on a sample basis and found to comply with the limits set by the FCC for this type of device. These rules are designed to provide reasonable protection against interference to television and radio reception in a residential installation. There is, however, no guarantee that interference will not occur in a particular installation. If interference generated by this unit is suspected, remove power from the ACR including battery, and determine if the interference is still present with the unit turned off. If the interference disappears with all power removed, confirm by re-applying power to check that the interference is again present. If the interference did not disappear with the power turned off, then the unit is not causing the problem. If it is found that this equipment does cause unacceptable interference to television reception, the following steps can be taken to reduce and/or eliminate the problem.

1. If using an indoor antenna, have a quality outdoor antenna installed.
2. Rotate antenna until interference is reduced or eliminated.
3. Move the television receiver away from the unit.
4. Plug the unit and the TV/radio receiver into different outlets, i.e. not on the same circuit breaker.
5. Move the antenna leads away from any wire runs for unit (in particular wire runs to any SCS).
6. If necessary the user should contact his certified alarm installer or an experienced TV/radio technician for additional suggestions.

The user may also refer to the following booklet prepared by the FCC and available from most public libraries or direct from the U.S. Government Printing Office: "How to Identify and Resolve Radio-TV Interference Problems" (Stock No. 004-000-0034504)

**DTI Security**